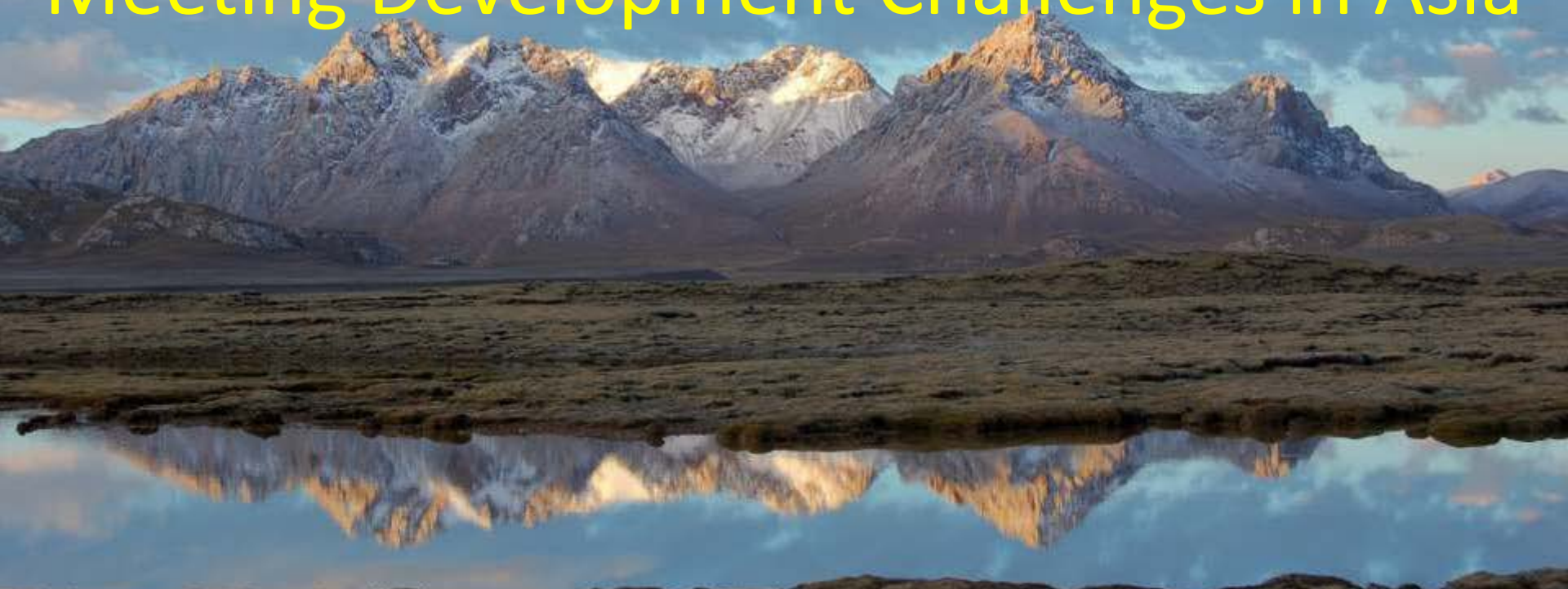


# Protected Areas

## Meeting Development Challenges in Asia



Midori Paxton

Regional Technical Adviser, Biodiversity and Ecosystem Team  
Energy and Environment Group, UNDP

# The Future We Want: Stark Choices



Global poverty  
and inequity



Scarcity and  
vulnerability



Natural world on  
brink of collapse



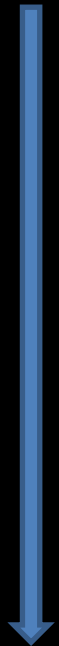
Global wellbeing  
and justice



Abundance  
and security

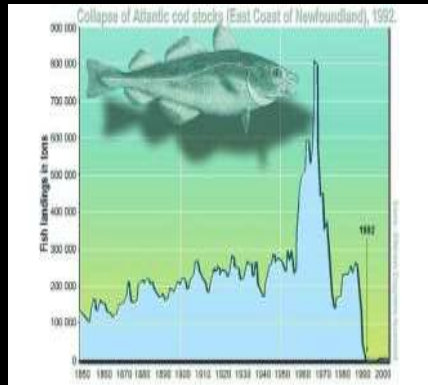


Vital and resilient  
natural world





# Current Trajectory



Fisheries  
collapse



Water  
shortages



Climate change  
impacts



Food insecurity and  
instability



Ecosystem services  
declines



Poverty and  
inequity

# Value of Nature



To productive fisheries



To water supplies



To climate resilience



To food security and stability



To ecosystem services



To local livelihoods and economies



# Biodiversity Framework – 2012-2020

*Empowered lives.  
Resilient nations.*

Mainstreaming

Protected Areas

EBA/EBM



United Nations Development Programme  
ENVIRONMENT AND ENERGY  
THE FUTURE WE WANT  
BIODIVERSITY AND ECOSYSTEMS -  
DRIVING SUSTAINABLE DEVELOPMENT  
BIODIVERSITY AND ECOSYSTEMS GLOBAL FRAMEWORK 2012-2020

BIODIVERSITY AND ECOSYSTEMS GLOBAL FRAMEWORK 2012-2020  
DRIVING SUSTAINABLE DEVELOPMENT  
BIODIVERSITY AND ECOSYSTEMS -  
THE FUTURE WE WANT  
ENVIRONMENT AND ENERGY



# Programme 2: Protected Areas

*Unleash the economic potential of PA systems so they are effectively managed, are sustainably financed and contribute towards sustainable development*



## Achievements in PA Coverage

UNDP is the **largest UN agency** in terms of our BD portfolio, by far

→ 40 year investment in reversing BD loss

→ Global portfolio **worth USD 5.1 billion** since 2000, including all sources of funds

→ **146 countries**

→ Wide range of interventions in productive sectors in 38 countries, covering 244 million ha

## UNDP's Total Impacts

Over 2,000 PAs Impacted  
**272 million ha**  
**85 countries**





# PROTECTED AREA PROGRAMME: ASIA-PACIFIC 2012

**82 new PAs established:  
12 million ha**

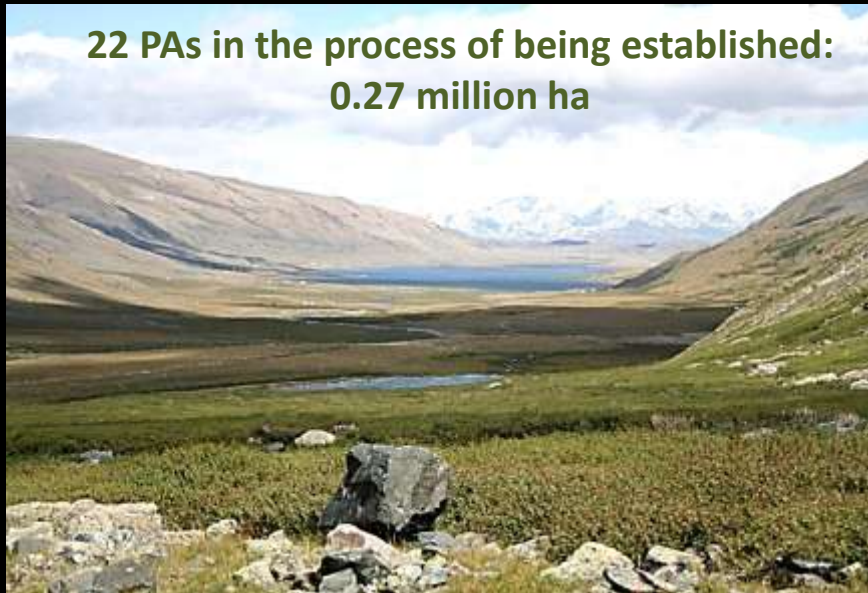


© Marc Foggin

**Improved management effectiveness in  
355 existing PAs of 51 million ha**



**22 PAs in the process of being established:  
0.27 million ha**



**Total Number of PAs impacted:  
459 PAs, 64 million hectares in 19  
countries**







# Barriers Removal Addressed by UNDP PA Programme

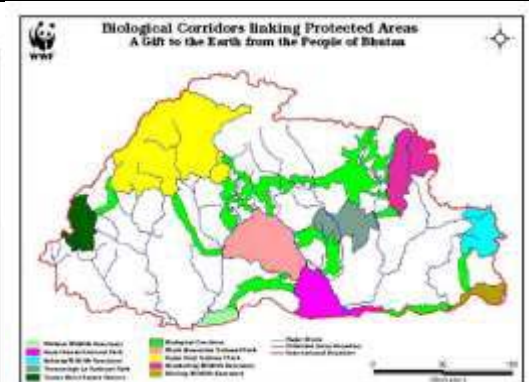
---

- 1. Systemic:** inadequate policy and regulatory frameworks
- 2. Institutional:** capacity gaps in the PA governance system
- 3. Individual:** limited capacity amongst PA managers to perform basic PA functions
- 4. Financial:** insufficient budgetary allocations within PA systems
- 5. Biogeographical representation:** important biodiversity excluded

# PA System Strengthening

Systemic and institutional capacity for self-sustaining results.

- Enabling legal/policy framework
- PA system planning
- Financing plans
- Institutional building
- Operational management improvement





# Examples of PA Support in Asia

- Mongolia, Vietnam, Malaysia, Thailand, Cambodia – PA financing strengthening
- Mongolia - PA concession system development
- Thailand - The National Parks and Protected Areas Innovation Institute
- India, China, Malaysia – Marine PA system strengthening
- Nepal, Bhutan – Improving connectivity through biological corridors



# Examples of PA Support in Asia

- Pakistan, Mongolia, Philippines, Maldives, India – CCA establishment, declaration of biosphere reserves(Baa Atoll), medicinal Plant Conservation Areas
- Cambodia, China, Indonesia, Myanmar etc. - Livelihood support, co-management and landscape management as threat reduction measures







IUCN  
WORLD PARKS CONGRESS  
SYDNEY 2014

## Towards World Parks Congress

# *Stream 5: Reconciling Development Challenges*



World Business Council for  
Sustainable Development



*Empowered lives.  
Resilient nations.*

A sunset scene at Tioman Marine Park, Malaysia. The sky is filled with vibrant orange and yellow clouds, transitioning to a deep blue at the horizon. In the foreground, a large, dark, tree-covered rock formation stands prominently on the right. To the left, a boat with a canopy is visible on the water, and a smaller boat is further out. The overall atmosphere is serene and beautiful.

Thank You!